

Jewish Federation  
OF GREATER HOUSTON

# 2026 LOCAL IMPACT FUND



On a scale of a guinea pig, how are you feeling today?





# FUND OVERVIEW

The Local Impact Fund addresses important and/or unmet needs of our Greater Houston Jewish community by awarding programmatic grants based on set priority areas.

The fund allows the Federation to serve a wider breadth of areas and interest groups in our community and creates the opportunity to become more data driven by selecting programs that can track and report success and impact.



# 2026 PRIORITY AREAS

## Engagement

- Elementary and middle school age children
- Adults across ages and stages, including seniors
- Jewish community partnerships across religious practices
- Community-wide initiatives across Greater Houston

## Education

- Combating antisemitism
- Fostering support for Israel
- Building bridges between the Jewish and non-Jewish communities
- Service learning and volunteer opportunities

## Accessibility & Belonging

- Youth and adults with special needs
- LGBTQIA+
- Interfaith families
- Mixed heritage and Jews of color
- Neighborhoods outside the central core Jewish area



## ELIGIBILITY & CRITERIA

- All organizations with a 501(c)(3) or tax-exempt status or that have a fiscal sponsor
- Programs/projects must be new (0-2 years) or expanding an existing program and serve the Jewish community
- Programs/projects should have a specific goal, and their impact should be able to be tracked
- All programs or initiatives must have a collaborative partner
- Maximum 3 years of funding, will need to reapply each year
- Grant range of up to \$30,000



# Ask yourself...





# TIMELINE

**July 31, 2026:** Letter of Inquiry (LOI) due, applicants will be notified on next steps in September

**November 4, 2026:** Applications due

**December 2026:** Final awards will be announced

**January – December 2027:** Program implementation, site visits, and impact reporting



# FUNDING RECAP

**2023**

13 awards ▶ \$183,000

**2024**

17 awards (4 renewed) ▶ \$188,360

**2025**

16 awards (9 renewed) ▶ \$198,000

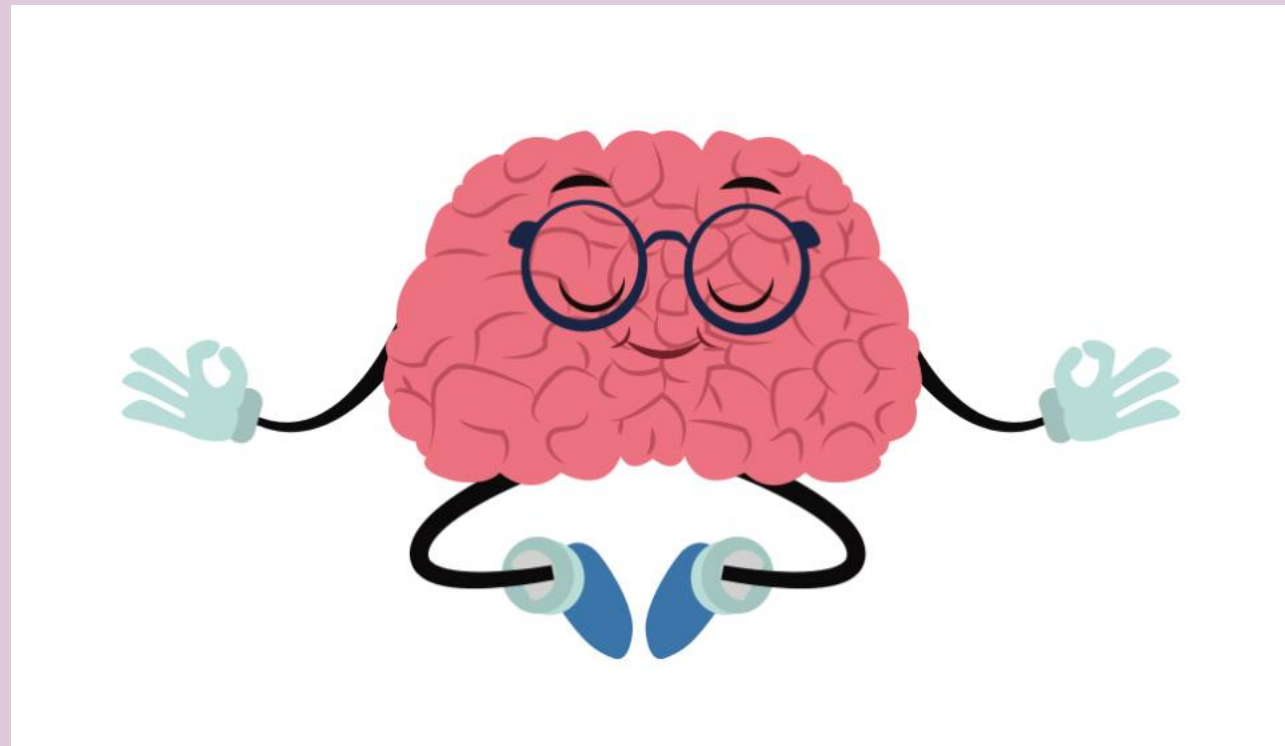


**QUESTIONS?**

# BRAIN BREAK

What projects are you working on as a Local Impact Fund application?

How can you collaborate with others in the room?



# **Grant Writing Workshop: Strengthening Your Local Impact Fund Proposal**

**Turning Your Vision into a  
Competitive Application**

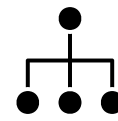
Presented by : Allison Boyd, GPC

# Today's Roadmap



## Defining Program Need and Impact

Framing the community need and aligning it with measurable outcomes.



## Structuring Programs for Grant Proposals

Connecting your activities to tangible results using logic models and SMART objectives



## Communicating Program Strengths

Writing clear descriptions, demonstrating your organization's capacity, and using the power of storytelling.



## Common Reviewer Pitfalls

Identifying frequent mistakes and learning strategies to avoid them.

# Why Write Grants?



## **Clarifies Vision**

The process requires you to focus your thoughts and articulate your organization's mission clearly.



## **Builds Capacity**

It is professionally fulfilling and helps you understand your program's mechanics better



## **Feedback is Invaluable**

Even a rejected proposal provides critical feedback. Armed with reviewers' comments, your second proposal will always be stronger.

# Framing the Community Need

## Identify the Gap

What specific problem or unmet need in Greater Houston are you addressing? Clearly articulate the issue your program aims to solve.

## Be Specific

Use data and community assessments to support your claims. Avoid broad, unsupported statements to build a compelling case.

## Align with JFGH Priorities

- Engagement
- Education
- Accessibility & Belonging

# TARGET

# Who Are You Serving?



## Define the Audience

Be precise about who will benefit (e.g., youth with special needs, interfaith families, elementary students).



## Quantify the Impact

How many individuals do you intend to serve? How many will attend more than once?



## Understand the Demographics

Tailor your approach to the specific characteristics and needs of your target population



# Aligning Programs with Measurable Outcomes

## Outputs

The direct products of program activities (often quantified as targets).

### EXAMPLE

50 students attended the after-school program; 10 classes were held.

## Outcomes

The changes or benefits that result from the program (knowledge, behavior, condition).

### EXAMPLE

80% of participating students demonstrated increased knowledge of Jewish heritage.



# Proving Your Effectiveness



## Quantitative Data

Numbers, percentages, and statistics (e.g. pre- and post-tests, attendance records, Likert scale surveys).



## Qualitative Data

Stories, observations, and interviews (e.g., participant testimonials, behavioral observations).

## THE EVALUATION PLAN

Establish how you will collect and analyze data from the very beginning. If it isn't documented, it didn't happen.



# The Logic Model Approach

## Inputs

Resources needed  
(funding, staff,  
space)

## Activities

What do you do to  
address the  
problem

## Outputs

Direct results (# of  
participants,  
sessions)

## Outcomes

Changes  
achieved  
(knowledge,  
behavior)

## Impact

Ultimate, broad-  
based change

# Making Your Goals Measurable

Use the SMART framework to set clear, achievable, and trackable program objectives.

**S**

## **SPECIFIC**

Clearly define who and what.

**M**

## **MEASURABLE**

Quantify the expected change.

**A**

## **ACHIEVABLE**

Ensure the goal is attainable within the timeframe.

**R**

## **RELEVANT**

Align with the identified need and JFGH priorities.

**T**

## **TIME-BOUND**

Set a clear deadline for achievement.

# The Power of Storytelling



## Engage Emotions

Storytelling captures attention and fosters a connection between your organization and the receiver.



## Provide Context

Use real stories or case studies to illustrate the urgency and significance of the need.



## Balance with Data

Complement compelling narratives with hard data and statistics to create a persuasive argument.



**Balance emotions with facts to create a persuasive argument.**



# Partnering for Greater Impact



## JFGH Requirement

Collaboration is required for Local Impact Fund proposals. Strong partnerships demonstrate community unity.



## Define Roles

Clearly explain the role of each partner. What specific resources, expertise, or outreach capabilities will they contribute?



## Letters of Support

Ensure collaborative partners (who are not the lead applicant) provide detailed letters of support on their official letterhead.)

# Writing Clear Program Descriptions

## 0 Avoid Jargon

1 Write clearly and concisely. Avoid industry buzzwords that reviewers might not understand. Use the “grandma test.”

## 02 Use Headers

Use the application questions as headers to guide the reviewer and ensure all points are addressed.

## 03 Be Direct

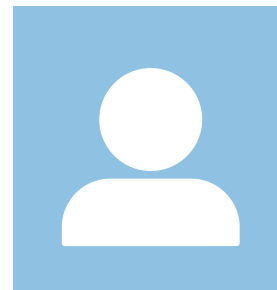
Tell the reader right up front what you are going to do, who will benefit, and why it matters.

# Why Your Organization?



## Highlight Expertise

Explain why your organization is uniquely suited to lead this specific program.



## Key Personnel

Detail the qualifications of the staff managing the program and specify if new staff will be hired.



## Governance & Oversight

Describe your organization's governance structure, including board and financial oversight.

# Telling the Same Story in Numbers



## Alignment

Ensure every expense in the budget is reflected and justified in the program narrative.



## Accuracy

Do not guess costs. Use accurate figures and provide context for significant expenses.



## Shared Costs

Detail any internal funds or additional funding sources that will support the program.

**\$30,000**

**LIF CAP**

Grant awards are up to \$30K for use during 2027.  
Plan accordingly.



# Planning for the Future



## Beyond the Grant

How will you financially support this program after the Local Impact Fund grant ends?



## Diversified Revenue

Discuss plans for user fees, fundraising, or securing other grants to ensure financial stability.



## Sustainability Outcomes

Focus on how the impact will be sustained, even if the specific program model evolves over time.

# Top Mistakes to Avoid

## 01 Lack of Clarity

1 The narrative is confusing, overly dense, or full of jargon.

## 03 Unmeasurable Objectives

Goals are too vague and lack quantifiable metrics.

## 02 Budget Disconnect

The budget does not match the activities described in the narrative.

## 04 Ignoring Instructions

Failing to answer specific questions, missing required attachments, or ignoring formatting guidelines.



# Planning for the Future



## Double-Check Requirements

Have you answered every part of every question?  
Are all attachments included?



## Fresh Eyes

Have someone unfamiliar with the project read the proposal to ensure it make sense.



## Proofread

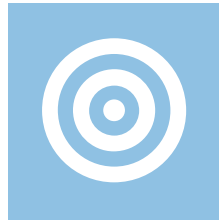
Check for spelling, grammar, and consistency in terminology.

# Moving Forward



## Map Your Concept

Use the Program Design Worksheet to outline your need, activities, and budget.



## Draft Your Narrative

Follow the Proposal Narrative Tips and Framework to structure your story.



## Build Your Evaluation

Use the Basic Outcome Template to create your Logic Model and SMART objectives.

## KEY DEADLINES

**LOI Deadline**

**July 31, 2026**

**Application Deadline**

**November 4, 2026**



Jewish Federation of Greater  
Houston

# Questions & Answers

**What specific challenges are you  
facing with your proposal?**

**Thank you!**

Allison Boyd, GPC



BOYD GRANTS  
ACADEMY